



Distributed by:  
 Safety Emporium  
 PO Box 1003  
 Blackwood, NJ 08012  
 Ph: (866) 326-5412 toll-free  
 Fax: (856) 553-6154  
 esupport@safetyemporium.com  
 www.safetyemporium.com



*their safety is essential.*

**Products made to work hard—and built to last.**

## HPLC Flammable Hazardous Waste Disposal Safety Cans

### Quick-disconnect safety cans take control of solvent waste

Collecting flammable liquids during the HPLC process requires a waste disposal safety can. The most common solvents—acetonitrile, hexane, and methanol—are flammable liquids and regulated. This hazardous waste must be stored and disposed of properly—and safely.

Justrite manufactures the only FM approved safety can for collecting and disposing of flammable liquids waste from the HPLC process. Justrite HPLC waste disposal safety cans prevent the escape of ignitable and toxic vapors, while also protecting the liquid and vapors inside from external heat sources, keeping laboratories and employees safe.

- Maximize safety and convenience with tighter controls during collection and disposal processes
- Eliminate vapors when dispensing with safety disconnects that are valved open when connected and valved closed when disconnected
- Self-closing lid helps guard contents from heat sources and prevents spills if knocked over
- Complies with OSHA, EPA, and NFPA regulations as a safe closed container



### Hands-Free Waste Collection

- Solvent flows freely from your process into the can through tubing
- Suitable for pump fed or gravity flow HPLC waste methods and compatible with most HPLC machines
- Connect one can to multiple HPLC machines for maximum use—accessory manifolds enable up to 12 waste lines to be fed into a single intake fitting



### Easy On, Easy Off—No Spills

- Quick-disconnect fittings let you detach the can from the process without disengaging tubing
- Fittings are valved to prevent vapor release or solvent leakage—automatically seals when disconnected
- Safely disconnect to swap containers or transport to the waste collection area
- Round-style cans feature a wide mouth opening and ergonomic handle



### Durable and Safe

- Durable polyethylene is translucent for quick visual inspection of liquid level
- Pouring spout includes stainless steel flame arrester to prevent flashback ignition
- Dual fittings (one intake, one vent) eliminate back pressure and provide controlled handling of vapors
- Container automatically vents between 3 and 5 psig (0.2 and 0.35 bar)
- Can be grounded to avoid electric discharges igniting flammable vapors

Create custom designed cans to match your process needs. See our custom can form on page 4.

Distributed by:  
 Safety Emporium  
 PO Box 1003  
 Blackwood, NJ 08012  
 Ph: (866) 326-5412 toll-free  
 Fax: (856) 553-6154  
 esupport@safetyemporium.com  
 www.safetyemporium.com

## Quick-Disconnect Waste Disposal Safety Cans

The safe, compliant way to collect HPLC waste

### Oval-Style Safety Can

- Oval shape is easy to handle and maximizes storage space
- Trigger-style handle allows one-handed pouring from 1-7/16" (36 mm) spout

### Round-Style Safety Cans

- Large 3-5/8" (92 mm), strategically placed opening facilitates controlled pouring into larger vessels for proper hazardous waste disposal
- Easy-carry handle with fixed position latch keeps lid open for convenient pouring
- Choose from stainless steel or polypropylene fittings, or a combination of the two, based on chemical compatibility of the liquid waste
- Cans with faucet offer an alternate way to empty waste—attach flexible hose for greater accuracy



Capacity	OD x H	Fitting No 1 for Liquid Intake			Fitting No 2 for Vapor Release			Model
		Material	O-Ring	For tubing ID	Material	O-Ring	For tubing ID	
<b>Oval-Style Safety Can</b>								
1 gallon (4 L)	7.75" x 5.25" x 12.75" (197 x 133 x 324 mm)	Polypropylene	EPDM	0.375" (10 mm)	Polypropylene	EPDM	0.375" (10 mm)	12160
<b>Round-Style Safety Can</b>								
2 gallon (7.5 L)	12" x 14.75" (305 x 375 mm)	Stainless steel	PTFE	0.375" (10 mm)	Stainless steel	PTFE	0.375" (10 mm)	TF12752
		Stainless steel	PTFE		Polypropylene	EPDM		BY12752
		Polypropylene	EPDM		Polypropylene	EPDM		PP12752
5 gallon (19 L)	12" x 20" (305 x 508 mm)	Stainless steel	PTFE	0.375" (10 mm)	Stainless steel	PTFE	0.375" (10 mm)	TF12755
		Stainless steel	PTFE		Polypropylene	EPDM		BY12755
		Polypropylene	EPDM		Polypropylene	EPDM		PP12755
<b>Round-Style Safety Can with Faucet 08916</b>								
5 gallon (19 L)	12" x 20" (305 x 508 mm)	Stainless steel	PTFE	0.25" (6 mm)	Stainless steel	PTFE	0.25" (6 mm)	12770
				0.375" (10 mm)			0.375" (10 mm)	12771

## Spill Basin

Keeps work area clean around HPLC cans

- Use as spill containment to capture any inadvertent leakage from HPLC inflow tubes
- Meets EPA requirement for spill protection in HPLC applications
- Protect against accidental kicks or bumps when storing can and basin on the floor
- Sized to hold Justrite 2- and 5-gallon HPLC waste disposal safety cans
- Durable polyethylene is leakproof to make clean-up easy



Capacity	W x L x H	Model
5 gallon (19 L)	14.875" x 14.875" x 7.625" (379 x 379 x 194 mm)	84003

## Coalescing/Carbon Filters

### Minimize odor and trap harmful vapors

- Two-stage filter captures 99% of liquid particulates released as vapor to minimize odor and address environmental concerns
- Compatible with 2- and 5-gallon round-style safety cans—vent filter snaps conveniently into the quick-disconnect fitting
- Color-changing carbon filter changes from purple to black to indicate when replacement is necessary
- Coalescing filter can be reused several times—replace after three or four carbon filter cycles
- Meets EPA 40 CFR 264.173



Top carbon filter with filter replacement window simply twists on to coalescing filter for easy filter changes.

Description	Attachment/Use With	Model
Coalescing/carbon filter combo with stainless steel fittings	Round-style safety cans with stainless steel fittings	28162
Coalescing/carbon filter combo with polypropylene fittings	Round-style safety cans with polypropylene fittings	28161
Colormetric/carbon filter 3-pack replacements	28162 or 28161 Coalescing/carbon filter	28157

NOTE: When using HPLC carbon filter with FM approved Justrite safety disposal can, the Justrite safety disposal container has not been FM approved or tested in assembly with the HPLC filter attached. However, the container does comply with US OSHA 1910 and NFPA Code 30 requirements, both with and without the HPLC filter. Do not transport safety container while carbon filter is attached.

Use authorized Justrite accessories to ensure a safe and compliant system. With authorized Justrite accessories, you can be confident you have the right part for the system.

## Filter Wall Bracket Kits

- Mount filter separate from safety can when space is at a premium
- Keeps filters safe if in a location where easily knocked into
- Quick-disconnect fitting is valved to prevent vapor release when replacing filters—easily swap full and empty cans
- Includes 5"H stainless steel bracket, 2 self-tapping mounting screws, and female quick-disconnect fitting for 3/8" ID (10 mm) tubing (tubing not included)



Fitting Material	Dimensions H x W	Model
Polypropylene	5" x 4" (127 x 102 mm)	28150
Stainless Steel		28151

## HPLC Manifolds and Compression Fittings

### Get maximum use—connect one disposal can to multiple HPLC machines



Select a manifold to match your application based on chemical compatibility with solvent waste.

### Poly (PTFE) Manifolds

- Accommodate up to six waste lines—add the manifold with stacker connector to double capacity
- Compatible with 2- and 5-gallon round-style safety cans
- Includes six 1/4-28 ports and one 3/8" NPT ports, plus caps for each to seal unused ports and reduce vapor release
- Attach ETFE compression fittings with ferrules to hard-wall tubing; select from variety of sizes (sold separately)



Manifold 28177 with stacker 28179 and tubing connectors 28188 and 28189.

Description	Model
<b>Manifolds</b>	
Manifold with stainless steel quick disconnect (1)	28177
Manifold with polypropylene quick disconnect (1)	28178
Manifold with stainless steel stacker connector (1)—attach to 28177 or 28178 manifold	28179
<b>ETFE Compression Fittings and Replacement Cap</b>	
Fitting for 1/16" OD hard-wall tubing; blue, pack of 6.	28188
Fitting for 1/8" OD hard-wall tubing; green, pack of 6.	28189
Fitting for 2 mm OD hard-wall tubing; yellow, pack of 6.	28121
Fitting for 2.5 mm OD hard-wall tubing; orange, pack of 6.	28122
Fitting for 3 mm OD hard-wall tubing; red, pack of 6.	28123
Replacement poly cap kit (six 1/4-28 caps and one 3/8" NPT cap)	28180

## HPLC Stainless Steel Manifold

- Accommodates up to four waste lines
- Compatible with 2- and 5-gallon round-style safety cans with stainless steel fittings
- Includes four 1/4-28 ports plus caps for each to seal unused ports and reduce vapor release
- Includes a selection of PEEK™ compression fittings with PCTFE ferrules for hard-wall tubing (four 1/16" (2 mm) OD, four 1/8" (3 mm) OD tube fittings)

Description	Model
<b>Manifold</b>	
Manifold with stainless steel quick disconnect (1)	28168
<b>Replacement PEEK™ Compression Fittings and Caps</b>	
Fitting for 1/16" OD hard wall tubing; pack of 4	28174
Fitting for 1/8" OD hard wall tubing; pack of 4	28175
Replacement plug caps for unused ports; pack of 4	28176

Quote Only     Order Form

# Custom Disposal Can Specification Form

## End User:

Co. Name: \_\_\_\_\_

Co. Address: \_\_\_\_\_

Contact: \_\_\_\_\_

Phone: \_\_\_\_\_

End User Mark Number for this Assembly: \_\_\_\_\_  
(This is your internal identification of this custom product.)

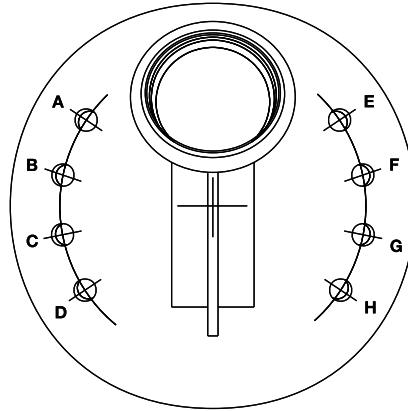
Application Type: \_\_\_\_\_  
(Use to identify other specifics about this custom product, i.e. department, location, etc.)

## Distributor:

Co. Name: \_\_\_\_\_ **Distributed by:**  
**Safety Emporium**  
 Co. Address: \_\_\_\_\_ **PO Box 1003**  
 \_\_\_\_\_ **Blackwood, NJ 08012**  
 Phone: \_\_\_\_\_ **Ph: (866) 326-5412 toll-free**  
 \_\_\_\_\_ **Fax: (856) 553-6154**  
 Distributor Contact: \_\_\_\_\_ **esupport@safetyemporium.com**  
 \_\_\_\_\_ **www.safetyemporium.com**  
 Justrite Sales Contact: \_\_\_\_\_

## Instructions:

1. Fill out one form for EACH design needed.
2. Complete the "End User" section in the upper left
3. Choose a Base Can size and quantity
4. Select the desired quick-disconnect fitting sizes and material
5. Indicate quantity and location for each fitting
6. Submit completed form to [custserv@justrite.com](mailto:custserv@justrite.com) or to your distributor
7. Once received, pricing will be added and the form will be returned for approval. Production will not proceed until authorized approval is received.



### Base Can

#12751 2 Gal. (7.5 L)

Quantity Needed: \_\_\_\_\_

Price \$ \_\_\_\_\_

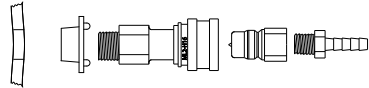
#12754 5 Gal. (19 L)

Quantity Needed: \_\_\_\_\_

Price \$ \_\_\_\_\_

### Stainless Steel Fitting 1/4" (6mm) Tube

#12013 Installed    Price \$ \_\_\_\_\_



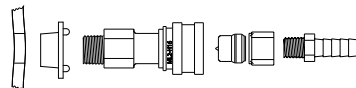
Disconnect Assembly **Stainless Steel with PTFE Seals** - 1/4" (6mm) Flow, 1/4" (6mm) Tube ID

Quantity per Assembly \_\_\_\_\_

Locations (A,B,C,D,E,F,G or H) \_\_\_\_\_

### Stainless Steel Fitting 3/8" (10mm) Tube

#12014 Installed    Price \$ \_\_\_\_\_



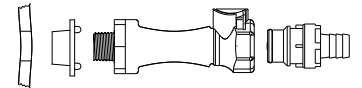
Disconnect Assembly **Stainless Steel with PTFE Seals** - 1/4" (6mm) Flow, 3/8" (10mm) Tube ID

Quantity per Assembly \_\_\_\_\_

Locations (A,B,C,D,E,F,G or H) \_\_\_\_\_

### Polypropylene Fitting 3/8" (10mm) Tube

#12012 Installed    Price \$ \_\_\_\_\_

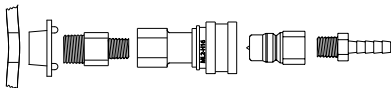


Disconnect Assembly **Polypropylene with EPDM Seals** - 1/4" (6mm) Flow, 3/8" (10mm) Tube ID

Quantity per Assembly \_\_\_\_\_

Locations (A,B,C,D,E,F,G or H) \_\_\_\_\_

#12015 Installed    Price \$ \_\_\_\_\_

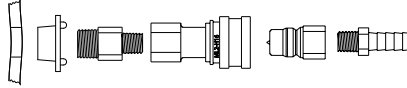


Disconnect Assembly **Stainless Steel with Viton Seals** - 1/4" (6mm) Flow, 1/4" (6mm) Tube ID

Quantity per Assembly \_\_\_\_\_

Locations (A,B,C,D,E,F,G or H) \_\_\_\_\_

#12016 Installed    Price \$ \_\_\_\_\_



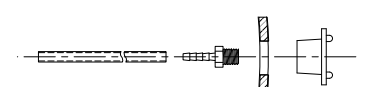
Disconnect Assembly **Stainless Steel with Viton Seals** - 1/4" (6mm) Flow, 3/8" (10mm) Tube ID

Quantity per Assembly \_\_\_\_\_

Locations (A,B,C,D,E,F,G or H) \_\_\_\_\_

### Suction Tube S. S. Fitting 1/4" (6mm)

#12020 Installed    Price \$ \_\_\_\_\_

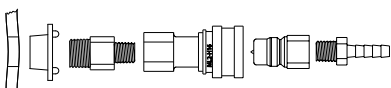


Suction Option Assembly  
Must Be Used with Disconnect Assembly

Quantity per Assembly \_\_\_\_\_

Locations (A,B,C,D,E,F,G or H) \_\_\_\_\_

#12017 Installed    Price \$ \_\_\_\_\_

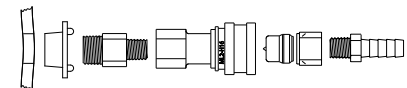


Disconnect Assembly **Stainless Steel with EPDM Seals** - 1/4" (6mm) Flow, 1/4" (6mm) Tube ID

Quantity per Assembly \_\_\_\_\_

Locations (A,B,C,D,E,F,G or H) \_\_\_\_\_

#12018 Installed    Price \$ \_\_\_\_\_



Disconnect Assembly **Stainless Steel with EPDM Seals** - 1/4" (6mm) Flow, 3/8" (10mm) Tube ID

Quantity per Assembly \_\_\_\_\_

Locations (A,B,C,D,E,F,G or H) \_\_\_\_\_

**NOTE:** A minimum of two disconnect fittings are required, one intake and one vent. Unless otherwise specified, vent fitting will be same as intake fitting.

Because of the complex nature of chemicals, Justrite cannot offer specific recommendations on chemical compatibility. **Custom Cans are not returnable.**

## For Internal Use Only:

Justrite Order No.: \_\_\_\_\_

Date: \_\_\_\_\_

Customer Service Rep: \_\_\_\_\_

*I have reviewed this form for correctness.*  
Customer Service Manager: \_\_\_\_\_

Price One Custom Can:    \$ \_\_\_\_\_

Total Price

Quote Only    \$ \_\_\_\_\_

Order    \$ \_\_\_\_\_

P.O. # \_\_\_\_\_

End User Approval Signature: \_\_\_\_\_

Approval Date: \_\_\_\_\_